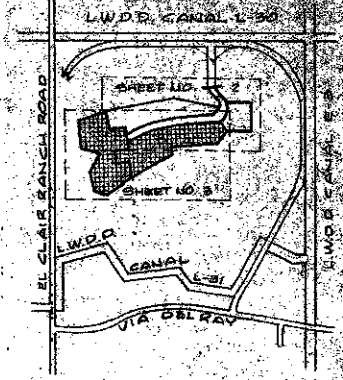


38-22

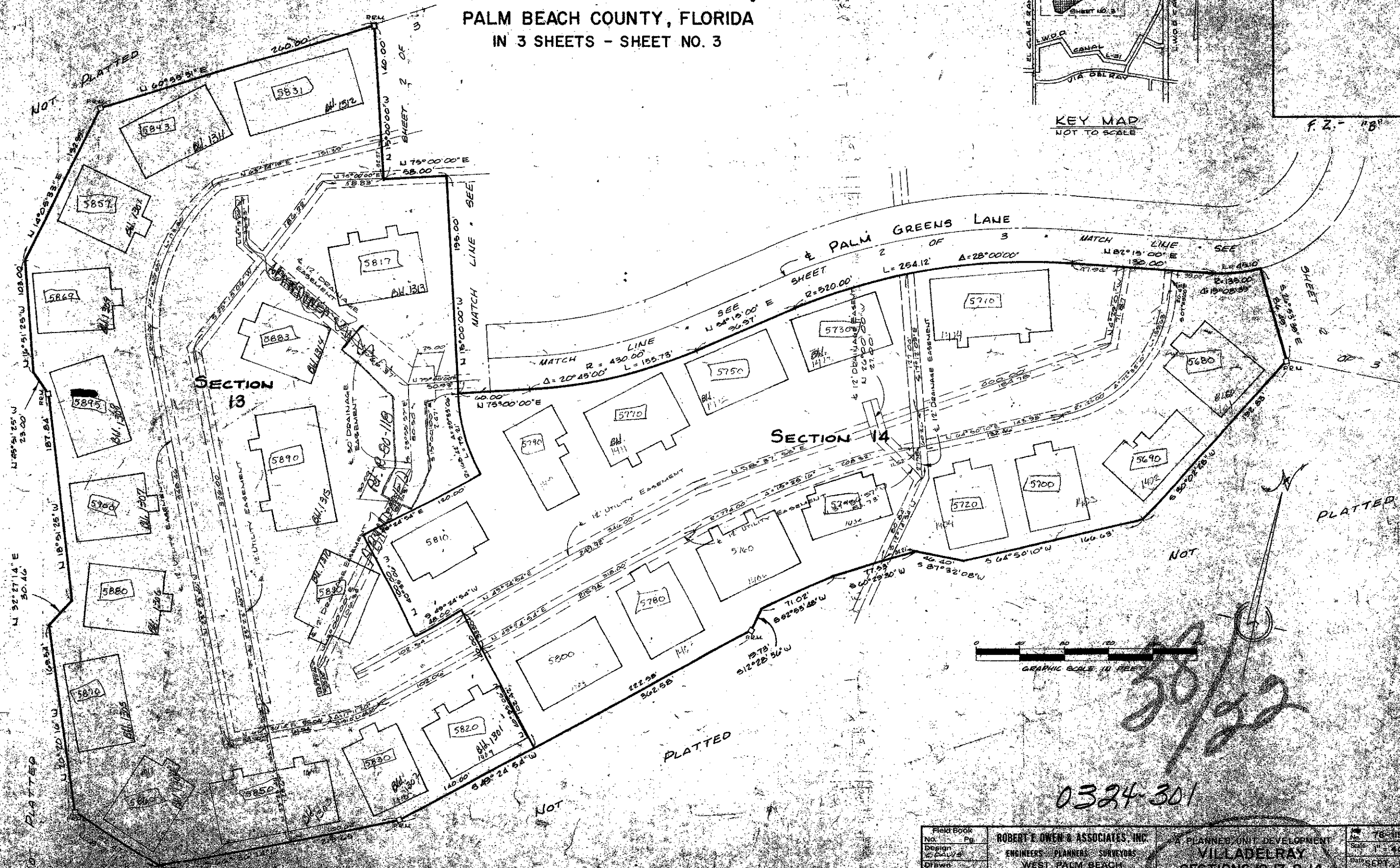
A PLANNED UNIT DEVELOPMENT VILLADELRAY - SECTIONS 12, 13 AND 14

PALM BEACH COUNTY, FLORIDA
IN 3 SHEETS - SHEET NO. 3



KEY MAP
NOT TO SCALE

F. 2. - '88



38/22

0324-301

Field Book No. Pg.	ROBERT E. OWEN & ASSOCIATES, INC. ENGINEERS, PLANNERS, SURVEYORS WEST PALM BEACH FLORIDA	A PLANNED UNIT DEVELOPMENT VILLADELRAY SECTIONS 12, 13 & 14 PALM BEACH COUNTY, FLORIDA IN 3 SHEETS - SHEET NO. 3	78-154 Scale: 1" = 40' Date: SEPT. 1978 Sheet: 3
-----------------------	---	--	---